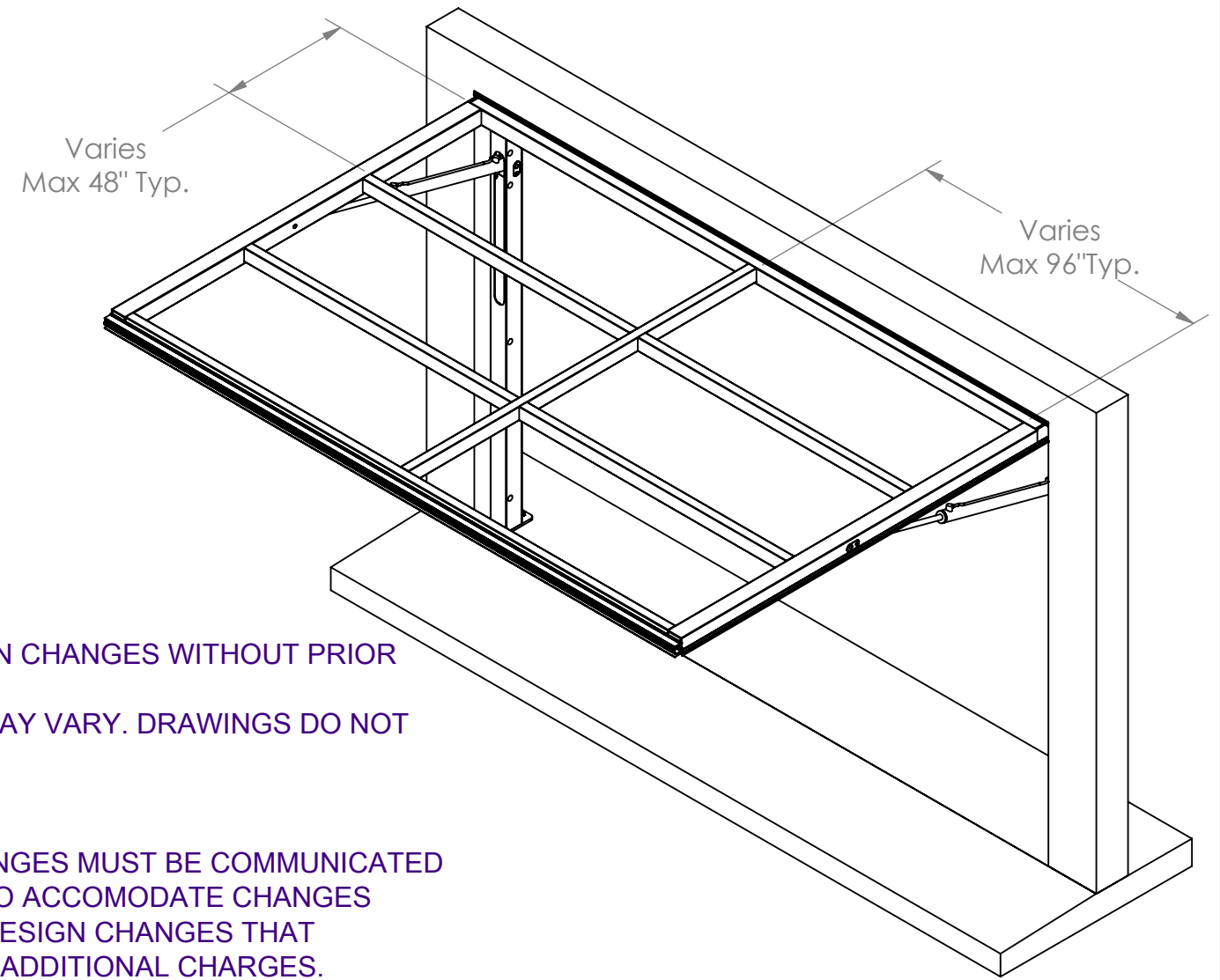




# Small Frame Generic Sample Detail Drawings

**GENERAL NOTES FOR ALL SHEETS:**

1. HYDAWAY HYDRAULIC WALLS RESERVES THE RIGHT TO MAKE PRODUCT DESIGN AND INSTALLATION CHANGES WITHOUT PRIOR NOTICE.
2. THESE DRAWINGS REPRESENT TYPICAL ASSUMED CONDITIONS. PROJECT-SPECIFIC CONDITIONS MAY VARY. DRAWINGS DO NOT REPRESENT ALL AVAILABLE OPTIONS AND PROJECT CONDITIONS.
3. BUILDING JAMBS AND HEADER ARE BY OTHERS.
4. HYDAWAY HYDRAULIC WALLS WILL NOT BE HELD RESPONSIBLE FOR CODE VIOLATIONS.
5. DIMENSIONS SPECIFIED ARE CRITICAL TO PROPER PRODUCT FUNCTIONALITY. ANY REQUIRED CHANGES MUST BE COMMUNICATED IMMEDIATELY TO HYDAWAY HYDRAULIC WALLS. HYDAWAY HYDRAULIC WALLS IS NOT OBLIGATED TO ACCOMODATE CHANGES TO HYDAWAY HYDRAULIC WALLS PRODUCTS REQUIRED BY PROJECT-SPECIFIC CONDITIONS. ANY DESIGN CHANGES THAT HYDAWAY HYDRAULIC WALLS MAKES TO ACCOODATE PROJECT-SPECIFIC CONDITIONS WILL INCUR ADDITIONAL CHARGES.
6. TOLERANCE FOR VERTICAL AND HORIZONTAL STEEL MEMBER LOCATIONS IN THE DOOR LEAF IS 1/8".
7. STEEL TUBE MEMBERS INCLUDED IN THE HYDAWAY HYDRAULIC WALL SYSTEM ARE SUBJECT TO CHANGE BASED ON OVERALL SIZE, CLADDING WEIGHT, WIND REQUIREMENTS, AND OTHER FACTORS.
8. MAXIMUM BUILDING HEADER DEFLECTION UNDER LOAD IS 1/2"
9. MAXIMUM LATERAL DRIFT OF SURROUNDING BUILDING STRUCTURE IS 1/2".
10. MAXIMUM ALLOWABLE RISE OF FINISHED FLOOR BETWEEN JAMBS IS 1/2".
11. IT IS THE RESPONSIBILITY OF THE CUSTOMER/CONTRACTOR TO ENSURE THE BUILDING STRUCTURE IS ADEQUATE FOR LOADS IMPOSED BY THE HYDAWAY HYDRAULIC WALLS SYSTEM ONTO THE SURROUNDING BUILDING STRUCTURE.
12. PROJECT-SPECIFIC LOADS IMPOSED BY THE HYDAWAY HYDRAULIC WALLS SYSTEM ON THE SURROUNDING BUILDING STRUCTURE ARE AVAILABLE UPON REQUEST.
13. ALL JOINTS BETWEEN HYDAWAY HYDRAULIC WALLS SYSTEM AND SURROUNDING BUILDING STRUCTURE TO BE CAULKED BY OTHERS.



**PROPRIETARY AND CONFIDENTIAL**  
 THE INFORMATION CONTAINED IN THIS DRAWING IS THE SOLE PROPERTY OF HYDAWAY WALLS. ANY REPRODUCTION IN PART OR AS A WHOLE WITHOUT THE WRITTEN PERMISSION OF HYDAWAY WALLS IS PROHIBITED.

UNLESS OTHERWISE SPECIFIED:  
 DIMENSIONS ARE IN INCHES  
 TOLERANCES:  
 FRACTIONAL ±  
 ANGULAR: MACH ± BEND ±  
 TWO PLACE DECIMAL ±  
 THREE PLACE DECIMAL ±  
 INTERPRET GEOMETRIC  
 TOLERANCING PER: ASME Y14.5-2009

TITLE:  
 Small Frame HydAway  
 Standard Drawing

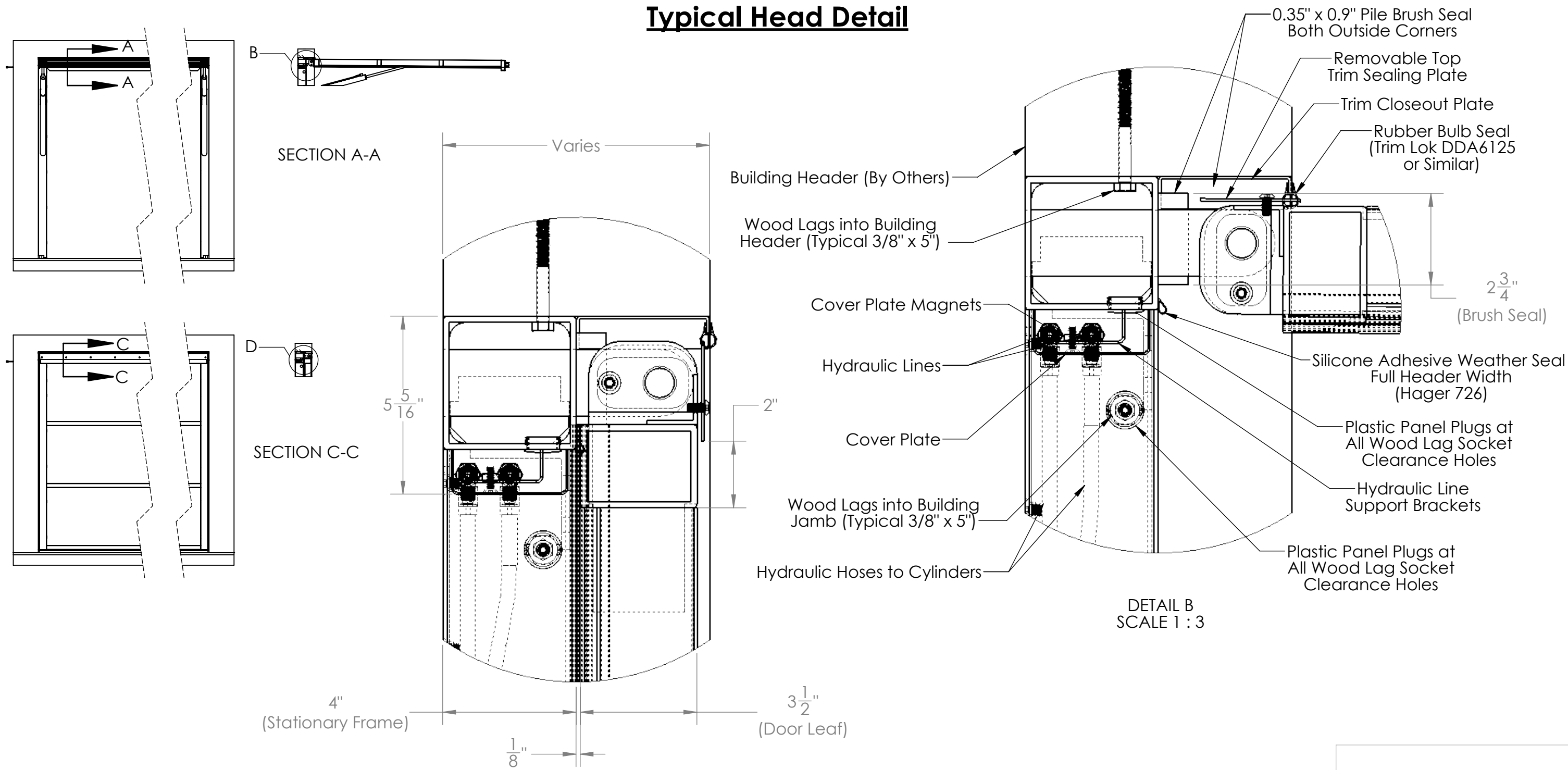
DOOR TYPE:  
 Small Frame HydAway

SCALE: 1:48

SHEET 1 OF 7

REV	DATE
A	11/1/2023
B	12/21/2023
C	1/4/2024
D	2/27/2024
E	6/5/2024
F	6/19/2024

# Typical Head Detail



SECTION A-A

SECTION C-C

DETAIL B  
SCALE 1 : 3

DETAIL D  
SCALE 1 : 3



**PROPRIETARY AND CONFIDENTIAL**  
 THE INFORMATION CONTAINED IN THIS DRAWING IS THE SOLE PROPERTY OF HYDAWAY WALLS. ANY REPRODUCTION IN PART OR AS A WHOLE WITHOUT THE WRITTEN PERMISSION OF HYDAWAY WALLS IS PROHIBITED.

UNLESS OTHERWISE SPECIFIED:  
 DIMENSIONS ARE IN INCHES  
 TOLERANCES:  
 FRACTIONAL ±  
 ANGULAR: MACH ± BEND ±  
 TWO PLACE DECIMAL ±  
 THREE PLACE DECIMAL ±  
 INTERPRET GEOMETRIC TOLERANCING PER: ASME Y14.5-2009

TITLE:  
 Small Frame HydAway  
 Standard Drawing

DOOR TYPE:  
 Small Frame HydAway

SCALE: 1:48 SHEET 2 OF 7

REV	DATE
A	11/1/2023
B	12/21/2023
C	1/4/2024
D	2/27/2024
E	6/5/2024
F	6/19/2024

4

3

2

1

4

3

2

1

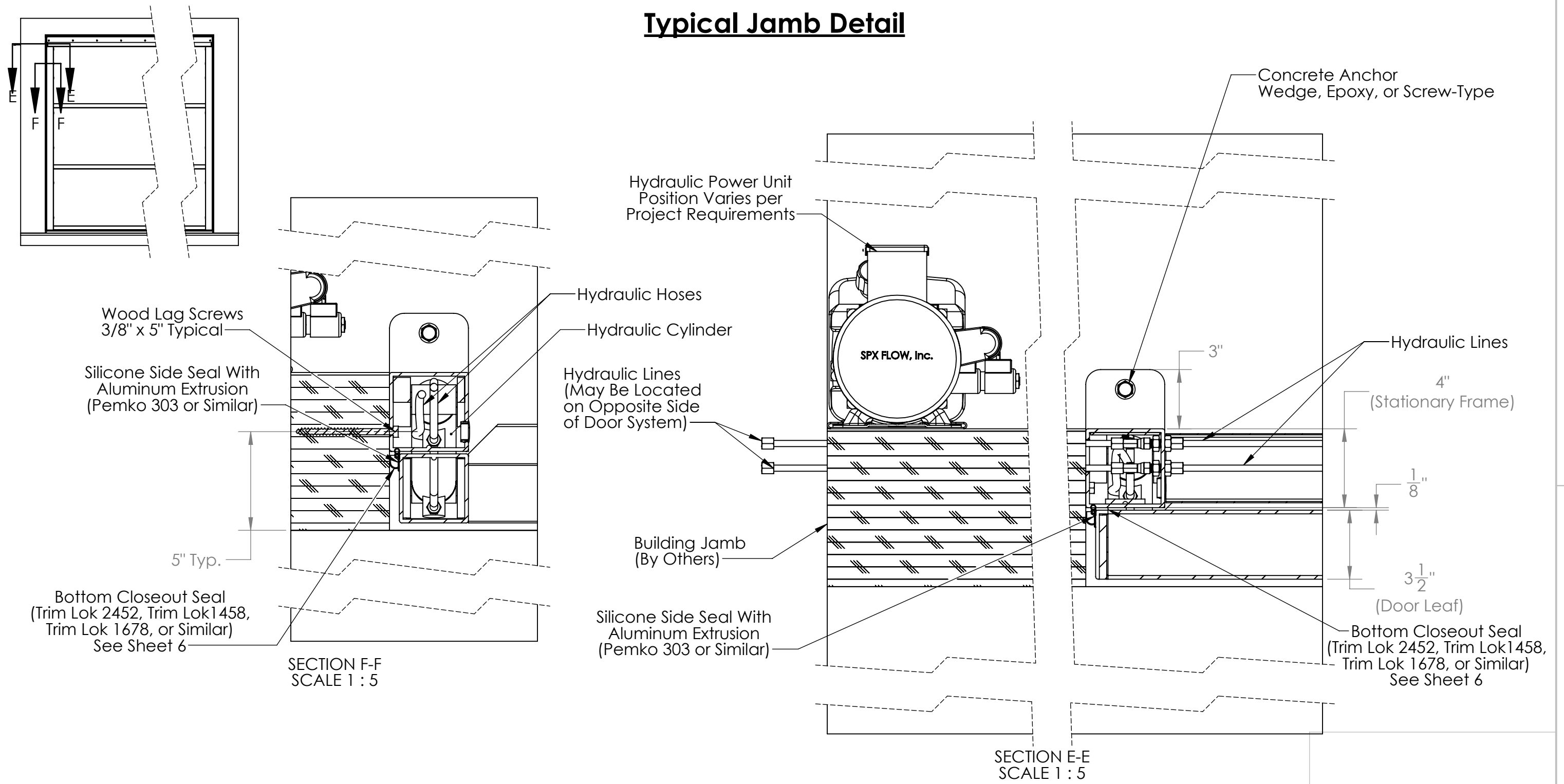
B

B

A

A

# Typical Jamb Detail



SECTION F-F  
SCALE 1 : 5

SECTION E-E  
SCALE 1 : 5



**PROPRIETARY AND CONFIDENTIAL**  
 THE INFORMATION CONTAINED IN THIS  
 DRAWING IS THE SOLE PROPERTY OF  
 HYDAWAY WALLS. ANY REPRODUCTION IN  
 PART OR AS A WHOLE WITHOUT THE  
 WRITTEN PERMISSION OF HYDAWAY WALLS  
 IS PROHIBITED.

UNLESS OTHERWISE SPECIFIED:  
 DIMENSIONS ARE IN INCHES  
 TOLERANCES:  
 FRACTIONAL ±  
 ANGULAR: MACH ± BEND ±  
 TWO PLACE DECIMAL ±  
 THREE PLACE DECIMAL ±  
 INTERPRET GEOMETRIC  
 TOLERANCING PER: ASME Y14.5-2009

TITLE:  
**Small Frame HydAway  
 Standard Drawing**

DOOR TYPE:  
 Small Frame HydAway

SCALE: 1:48

SHEET 3 OF 7

REV	DATE
A	11/1/2023
B	12/21/2023
C	1/4/2024
D	2/27/2024
E	6/5/2024
F	6/19/2024

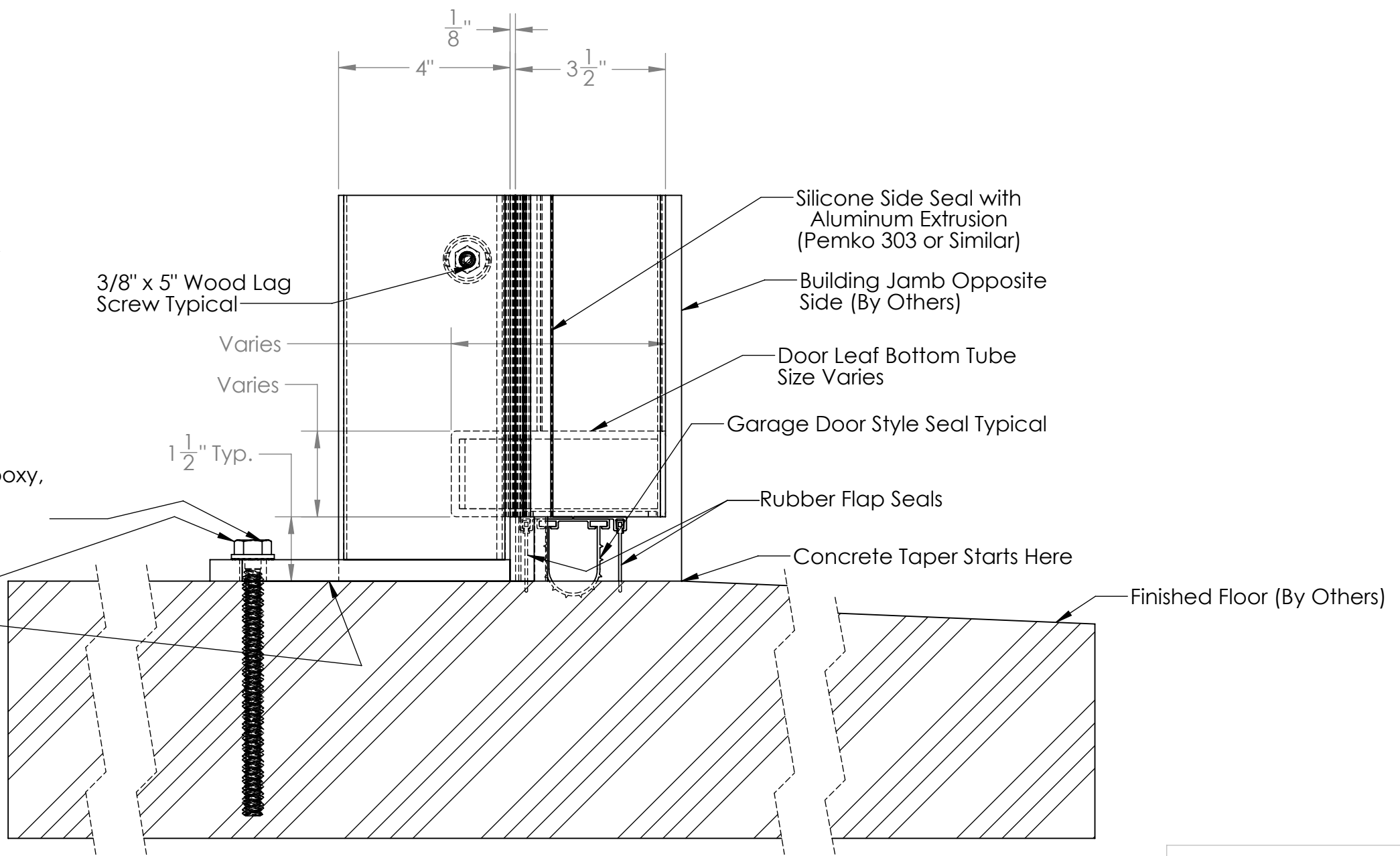
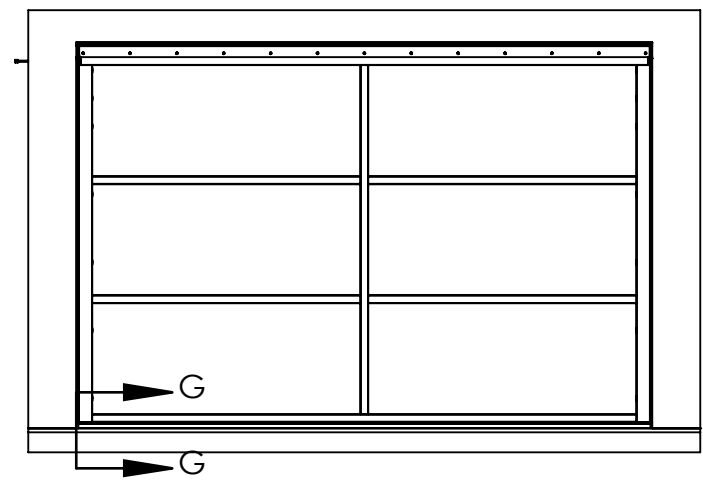
4

3

2

1

### Typical Sill Detail



1/2" x 5" Concrete Wedge, Epoxy, or Screw-Type Anchor Typical May Vary

Base Plates and Anchors May Be Omitted in Certain Installations (e.g. Countertop Installations)

SECTION G-G  
SCALE 1 : 3



**PROPRIETARY AND CONFIDENTIAL**  
THE INFORMATION CONTAINED IN THIS DRAWING IS THE SOLE PROPERTY OF HYDAWAY WALLS. ANY REPRODUCTION IN PART OR AS A WHOLE WITHOUT THE WRITTEN PERMISSION OF HYDAWAY WALLS IS PROHIBITED.

UNLESS OTHERWISE SPECIFIED:  
DIMENSIONS ARE IN INCHES  
TOLERANCES:  
FRACTIONAL ±  
ANGULAR: MACH ± BEND ±  
TWO PLACE DECIMAL ±  
THREE PLACE DECIMAL ±  
INTERPRET GEOMETRIC TOLERANCING PER: ASME Y14.5-2009

SITE ADDRESS:

TITLE:  
Small Frame HydAway Standard Drawing

DOOR TYPE:  
Small Frame HydAway

SCALE: 1:48

SHEET 4 OF 7

REV	DATE
A	11/1/2023
B	12/21/2023
C	1/4/2024
D	2/27/2024
E	6/5/2024
F	6/19/2024

4

3

2

1

B

B

A

A

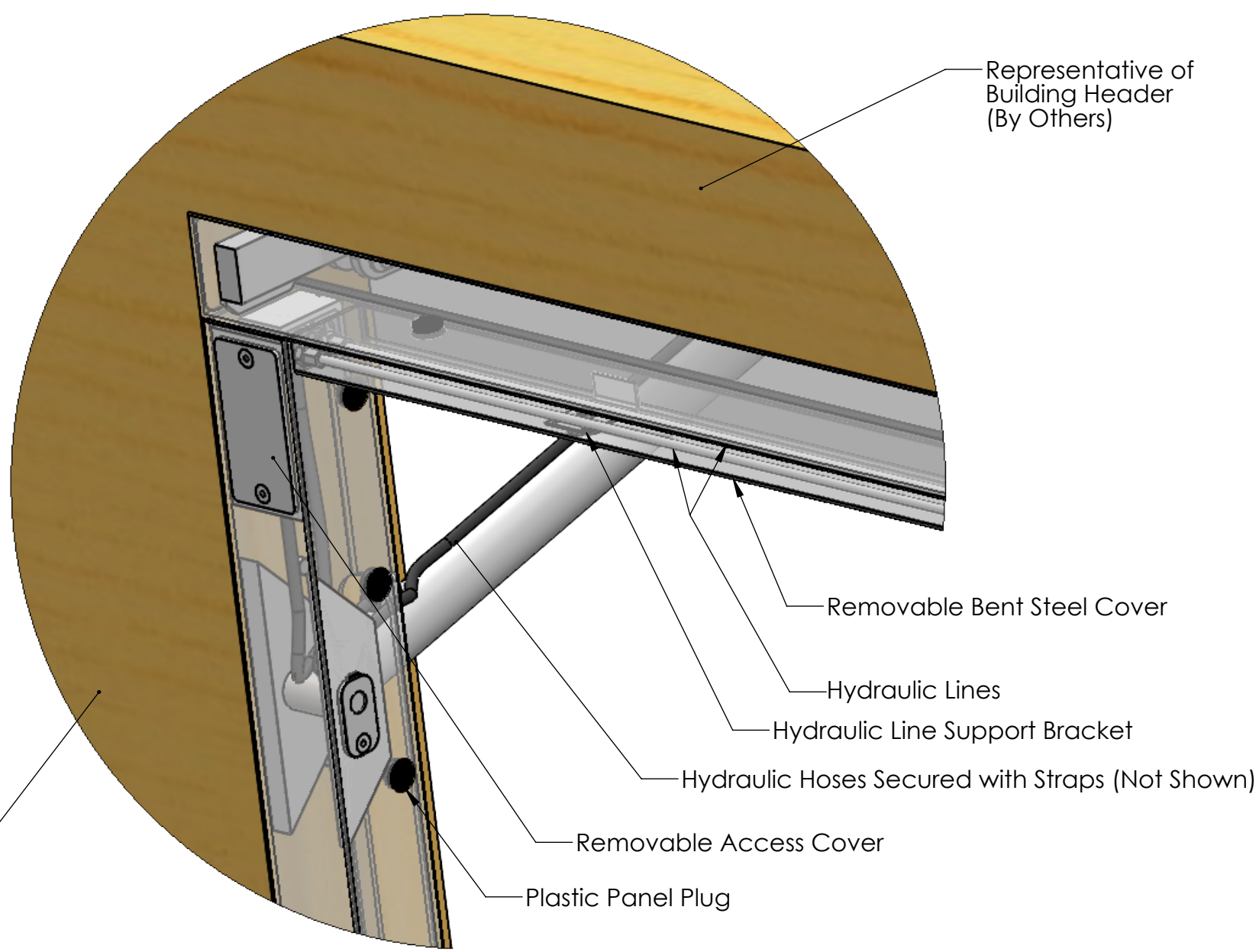
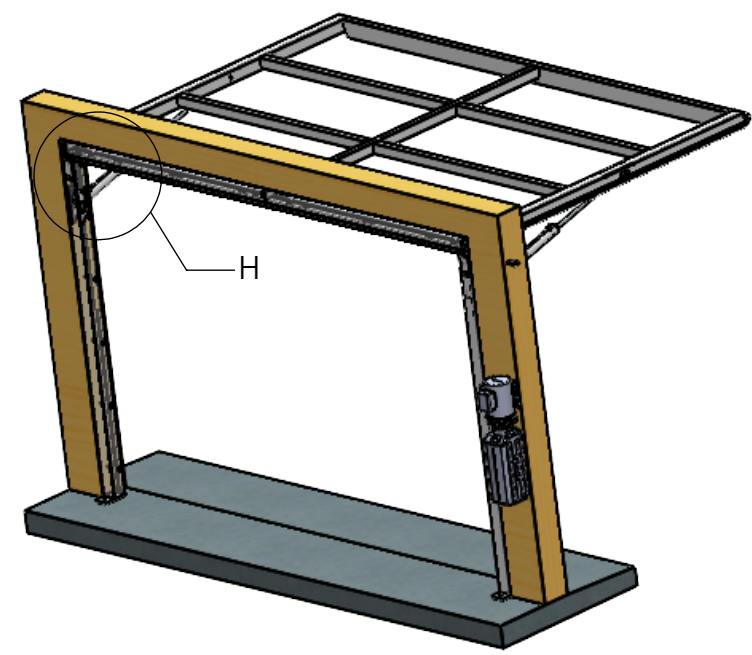
4

3

2

1

### Hydraulic Lines, Covers, and Access Panels



Representative of Building Jamb (By Others)

DETAIL H  
SCALE 1 : 5



**PROPRIETARY AND CONFIDENTIAL**  
 THE INFORMATION CONTAINED IN THIS DRAWING IS THE SOLE PROPERTY OF HYDAWAY WALLS. ANY REPRODUCTION IN PART OR AS A WHOLE WITHOUT THE WRITTEN PERMISSION OF HYDAWAY WALLS IS PROHIBITED.

UNLESS OTHERWISE SPECIFIED:  
 DIMENSIONS ARE IN INCHES  
 TOLERANCES:  
 FRACTIONAL ±  
 ANGULAR: MACH ± BEND ±  
 TWO PLACE DECIMAL ±  
 THREE PLACE DECIMAL ±  
 INTERPRET GEOMETRIC TOLERANCING PER: ASME Y14. 5-2009

SITE ADDRESS:

TITLE:  
 Small Frame HydAway  
 Standard Drawing

DOOR TYPE:  
 Small Frame HydAway

SCALE: 1:48 SHEET 5 OF 7

REV	DATE
A	11/1/2023
B	12/21/2023
C	1/4/2024
D	2/27/2024
E	6/5/2024
F	6/19/2024

4

3

2

1

B

B

A

A

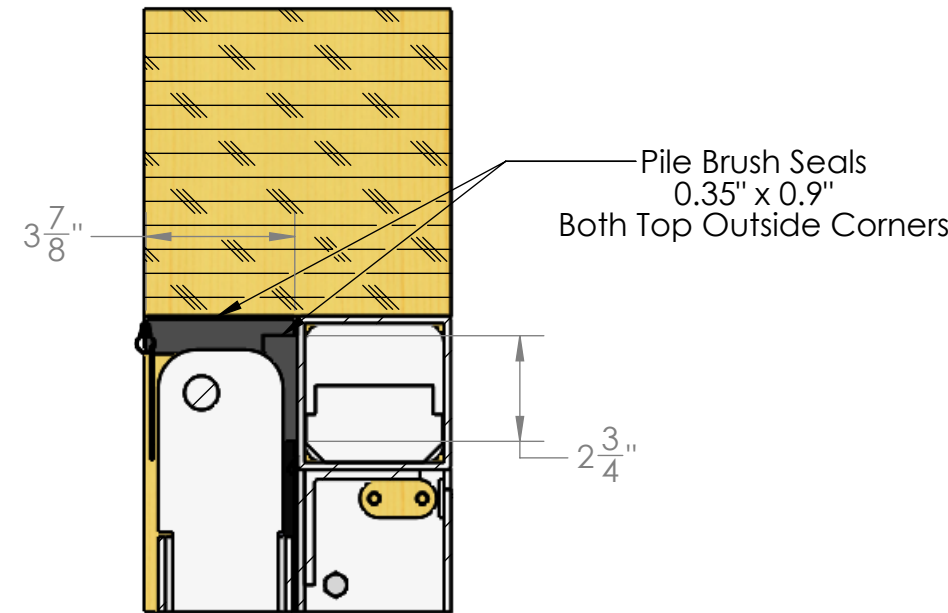
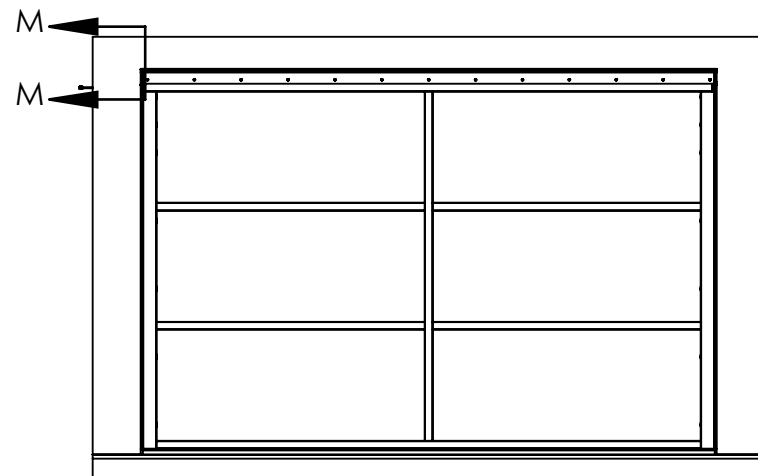
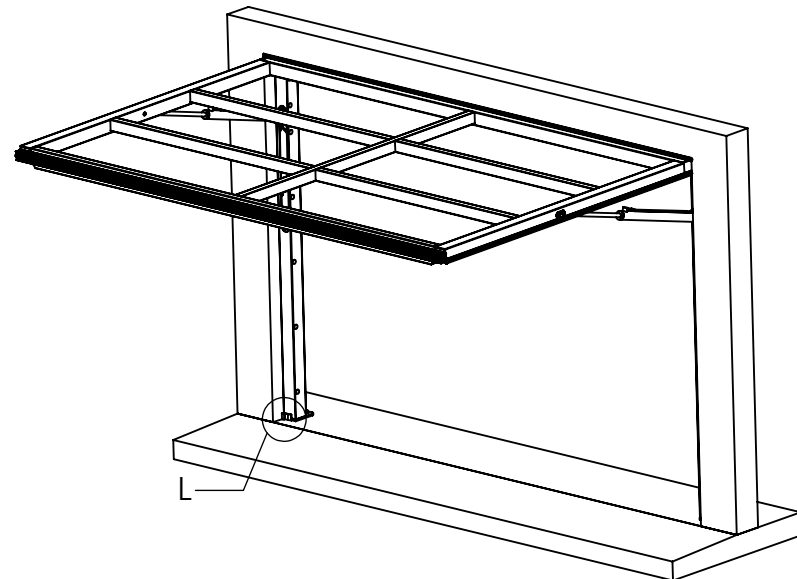
4

3

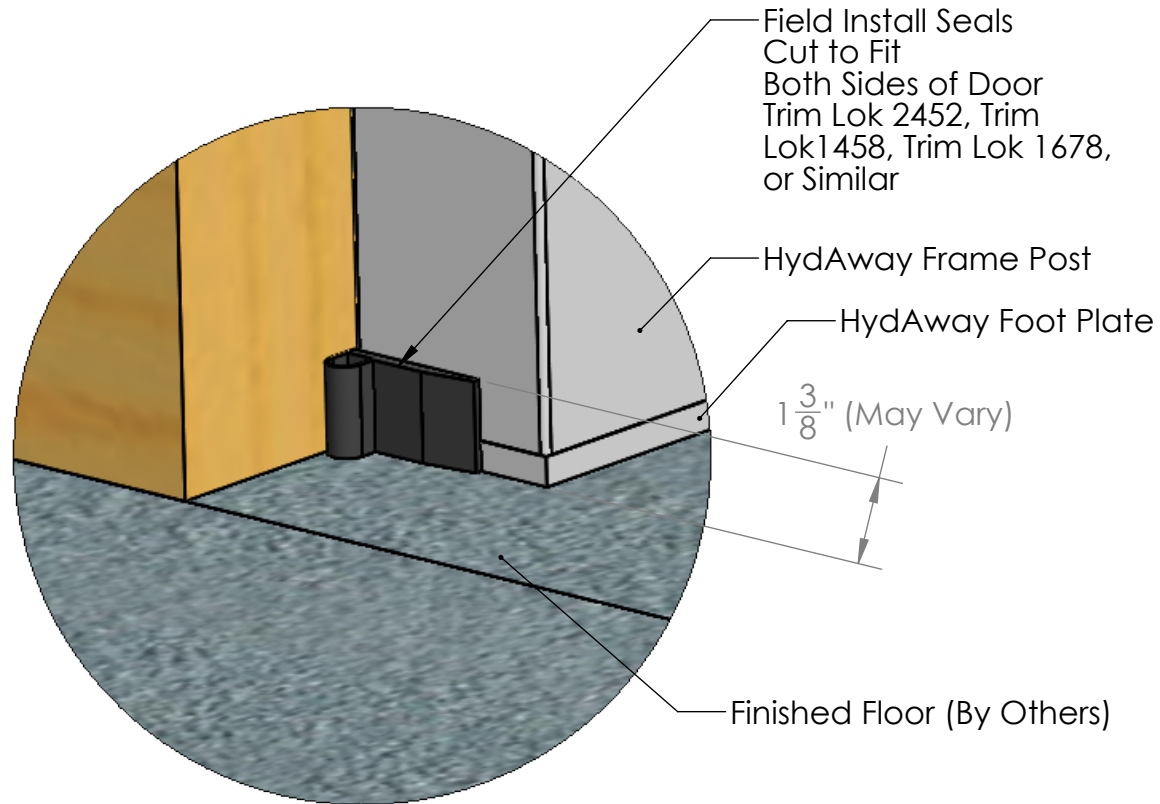
2

1

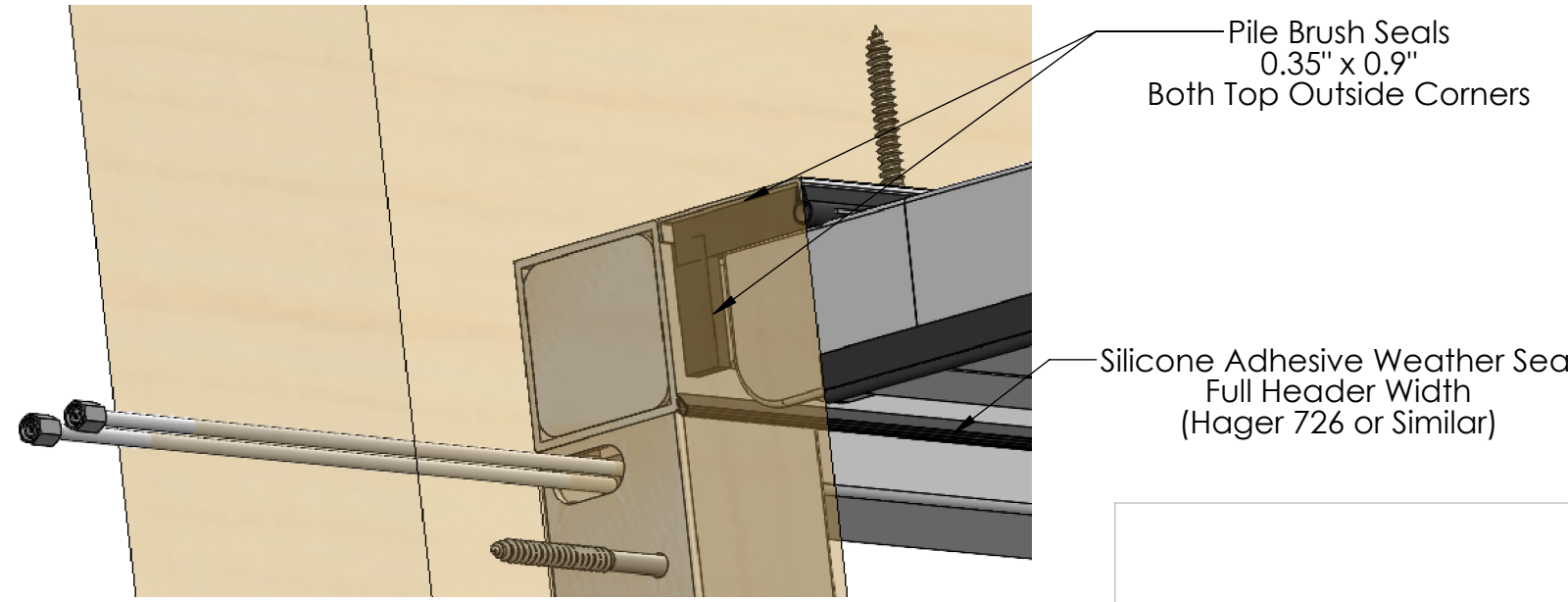
### Additional Details



SECTION M-M  
SCALE 1 : 5



DETAIL L  
SCALE 1 : 3



**PROPRIETARY AND CONFIDENTIAL**  
 THE INFORMATION CONTAINED IN THIS DRAWING IS THE SOLE PROPERTY OF HYDAWAY WALLS. ANY REPRODUCTION IN PART OR AS A WHOLE WITHOUT THE WRITTEN PERMISSION OF HYDAWAY WALLS IS PROHIBITED.

UNLESS OTHERWISE SPECIFIED:  
 DIMENSIONS ARE IN INCHES  
 TOLERANCES:  
 FRACTIONAL ±  
 ANGULAR: MACH ± BEND ±  
 TWO PLACE DECIMAL ±  
 THREE PLACE DECIMAL ±  
 INTERPRET GEOMETRIC TOLERANCING PER: ASME Y14.5-2009

SITE ADDRESS:

TITLE:  
**Small Frame HydAway Standard Drawing**

DOOR TYPE:  
 Small Frame HydAway

SCALE: 1:48

SHEET 6 OF 7

REV	DATE
A	11/1/2023
B	12/21/2023
C	1/4/2024
D	2/27/2024
E	6/5/2024
F	6/19/2024

4

3

2

1

B

B

A

A

4

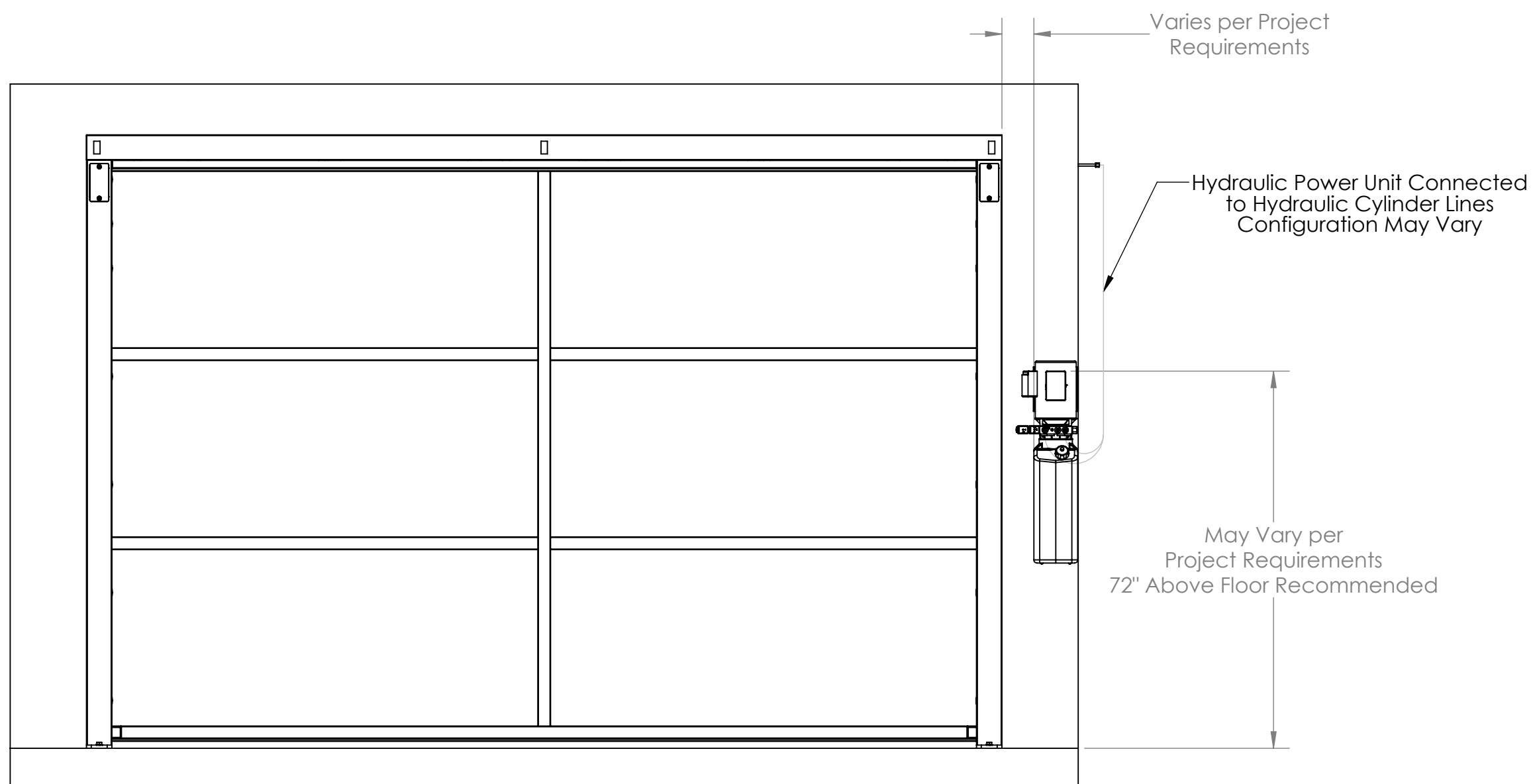
3

2

1

B

B



A

A



**PROPRIETARY AND CONFIDENTIAL**  
 THE INFORMATION CONTAINED IN THIS DRAWING IS THE SOLE PROPERTY OF HYDAWAY WALLS. ANY REPRODUCTION IN PART OR AS A WHOLE WITHOUT THE WRITTEN PERMISSION OF HYDAWAY WALLS IS PROHIBITED.

UNLESS OTHERWISE SPECIFIED:  
 DIMENSIONS ARE IN INCHES  
 TOLERANCES:  
 FRACTIONAL ±  
 ANGULAR: MACH ± BEND ±  
 TWO PLACE DECIMAL ±  
 THREE PLACE DECIMAL ±  
 INTERPRET GEOMETRIC TOLERANCING PER: ASME Y14.5-2009

SITE ADDRESS:

TITLE:  
 Small Frame HydAway  
 Standard Drawing

DOOR TYPE:  
 Small Frame HydAway

SCALE: 1:20 SHEET 7 OF 7

REV	DATE
A	11/1/2023
B	12/21/2023
C	1/4/2024
D	2/27/2024
E	6/5/2024
F	6/19/2024

4

3

2

1