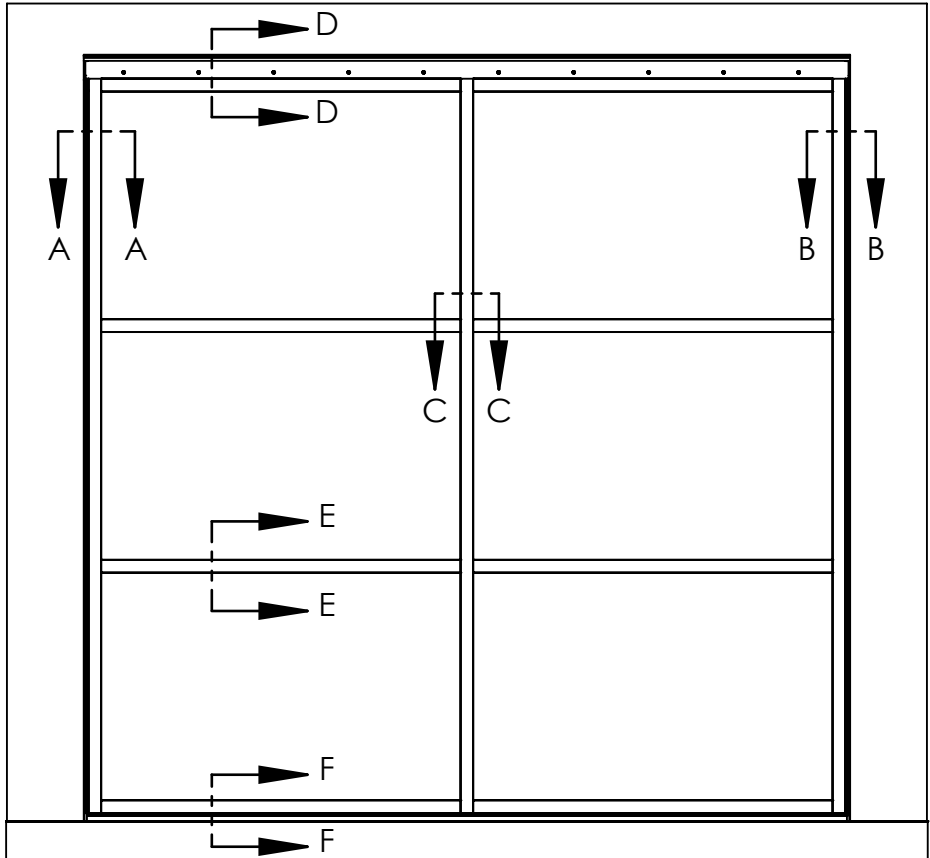


Wednesday, June 19, 2024 2:35:31 PM

GENERAL NOTES:

- VIEW IS FROM EXTERIOR
- HYDAWAY HYDRAULIC WALLS RESERVES THE RIGHT TO MAKE PRODUCT DESIGN AND INSTALLATION CHANGES WITHOUT PRIOR NOTICE.
- THESE DRAWINGS REPRESENT TYPICAL ASSUMED CONDITIONS. PROJECT-SPECIFIC CONDITIONS MAY VARY. DRAWINGS DO NOT REPRESENT ALL AVAILABLE OPTIONS AND PROJECT CONDITIONS.
- BUILDING JAMBS AND HEADER ARE BY OTHERS.
- HYDAWAY HYDRAULIC WALLS WILL NOT BE HELD RESPONSIBLE FOR CODE VIOLATIONS.
- DIMENSIONS SPECIFIED ARE CRITICAL TO PROPER PRODUCT FUNCTIONALITY. ANY REQUIRED CHANGES MUST BE COMMUNICATED IMMEDIATELY TO HYDAWAY HYDRAULIC WALLS. HYDAWAY HYDRAULIC WALLS IS NOT OBLIGATED TO ACCOMODATE CHANGES TO HYDAWAY HYDRAULIC WALLS PRODUCTS REQUIRED BY PROJECT-SPECIFIC CONDITIONS. ANY DESIGN CHANGES THAT HYDAWAY HYDRAULIC WALLS MAKES TO ACCOODATE PROJECT-SPECIFIC CONDITIONS WILL INCUR ADDITIONAL CHARGES.
- TOLERANCE FOR VERTICAL AND HORIZONTAL STEEL MEMBER LOCATIONS IN THE DOOR LEAF IS 1/8".
- STEEL TUBE MEMBERS INCLUDED IN THE HYDAWAY HYDRAULIC WALL SYSTEM ARE SUBJECT TO CHANGE BASED ON OVERALL SIZE, CLADDING WEIGHT, WIND REQUIREMENTS, AND OTHER FACTORS.
- MAXIMUM BUILDING HEADER DEFLECTION UNDER LOAD IS 1/2"
- MAXIMUM LATERAL DRIFT OF SURROUNDING BUILDING STRUCTURE IS 1/2".
- MAXIMUM ALLOWABLE RISE OF FINISHED FLOOR BETWEEN JAMBS IS 1/2".
- IT IS THE RESPONSIBILITY OF THE CUSTOMER/CONTRACTOR TO ENSURE THE BUILDING STRUCTURE IS ADEQUATE FOR LOADS IMPOSED BY THE HYDAWAY HYDRAULIC WALLS SYSTEM ONTO THE SURROUNDING BUILDING STRUCTURE.
- PROJECT-SPECIFIC LOADS IMPOSED BY THE HYDAWAY HYDRAULIC WALLS SYSTEM ON THE SURROUNDING BUILDING STRUCTURE ARE AVAILABLE UPON REQUEST.
- ALL JOINTS BETWEEN HYDAWAY HYDRAULIC WALLS SYSTEM AND SURROUNDING BUILDING STRUCTURE TO BE CAULKED BY OTHERS.



PROPRIETARY AND CONFIDENTIAL

THE INFORMATION CONTAINED IN THIS DRAWING IS THE SOLE PROPERTY OF HYDAWAY HYDRAULIC WALLS. ANY REPRODUCTION IN PART OR AS A WHOLE WITHOUT THE WRITTEN PERMISSION OF HYDAWAY HYDRAULIC WALLS IS PROHIBITED.

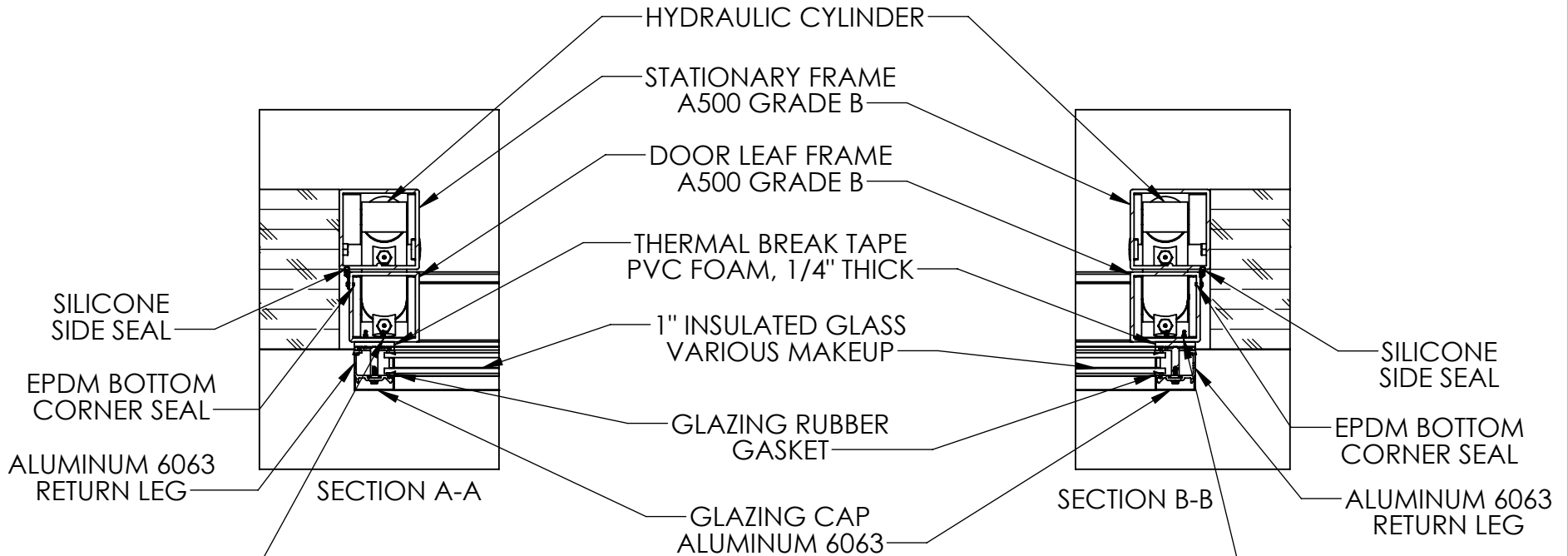


		UNLESS OTHERWISE SPECIFIED:		NAME	DATE
		DIMENSIONS ARE IN INCHES	DRAWN		
		TOLERANCES:	CHECKED		
		FRACTIONAL ±	ENG APPR.		
		ANGULAR: MACH ± BEND ±	MFG APPR.		
		TWO PLACE DECIMAL ±	Q.A.		
		THREE PLACE DECIMAL ±	COMMENTS:		
		INTERPRET GEOMETRIC TOLERANCING PER: ASME Y14. 5-2009			
		MATERIAL			
		FINISH			
NEXT ASSY	USED ON				
APPLICATION		DO NOT SCALE DRAWING			

Part Number		
TITLE: Small Frame HydAway Typical Glass Detail		
SIZE A	Door Type(s)	REV A
SCALE: 1:30	WEIGHT:	SHEET 1 OF 5

B

B



*****IMPORTANT: SCREWS MAY NEED TO BE GROUND, CUT, OR BROKEN OFF ON INSIDE OF STEEL TUBE TO AVOID INTERFERENCE WITH HYDRAULIC COMPONENTS. ALWAYS VERIFY CLEARANCE BEFORE INSTALLING SCREWS!*****

PROPRIETARY AND CONFIDENTIAL

THE INFORMATION CONTAINED IN THIS DRAWING IS THE SOLE PROPERTY OF HYDAWAY HYDRAULIC WALLS. ANY REPRODUCTION IN PART OR AS A WHOLE WITHOUT THE WRITTEN PERMISSION OF HYDAWAY HYDRAULIC WALLS IS PROHIBITED.

		UNLESS OTHERWISE SPECIFIED:		NAME	DATE	Part Number
		DIMENSIONS ARE IN INCHES	DRAWN			TITLE: Small Frame HydAway Typical Glass Detail
		TOLERANCES:	CHECKED			
		FRACTIONAL ±	ENG APPR.			
		ANGULAR: MACH ± BEND ±	MFG APPR.			
		TWO PLACE DECIMAL ±	Q.A.			
		THREE PLACE DECIMAL ±	COMMENTS:			
		INTERPRET GEOMETRIC TOLERANCING PER: ASME Y14. 5-2009				
		MATERIAL				SIZE Door Type(s) REV A
	NEXT ASSY	USED ON	FINISH			
	APPLICATION		DO NOT SCALE DRAWING			SCALE: 1:8 WEIGHT: SHEET 2 OF 5



A

A

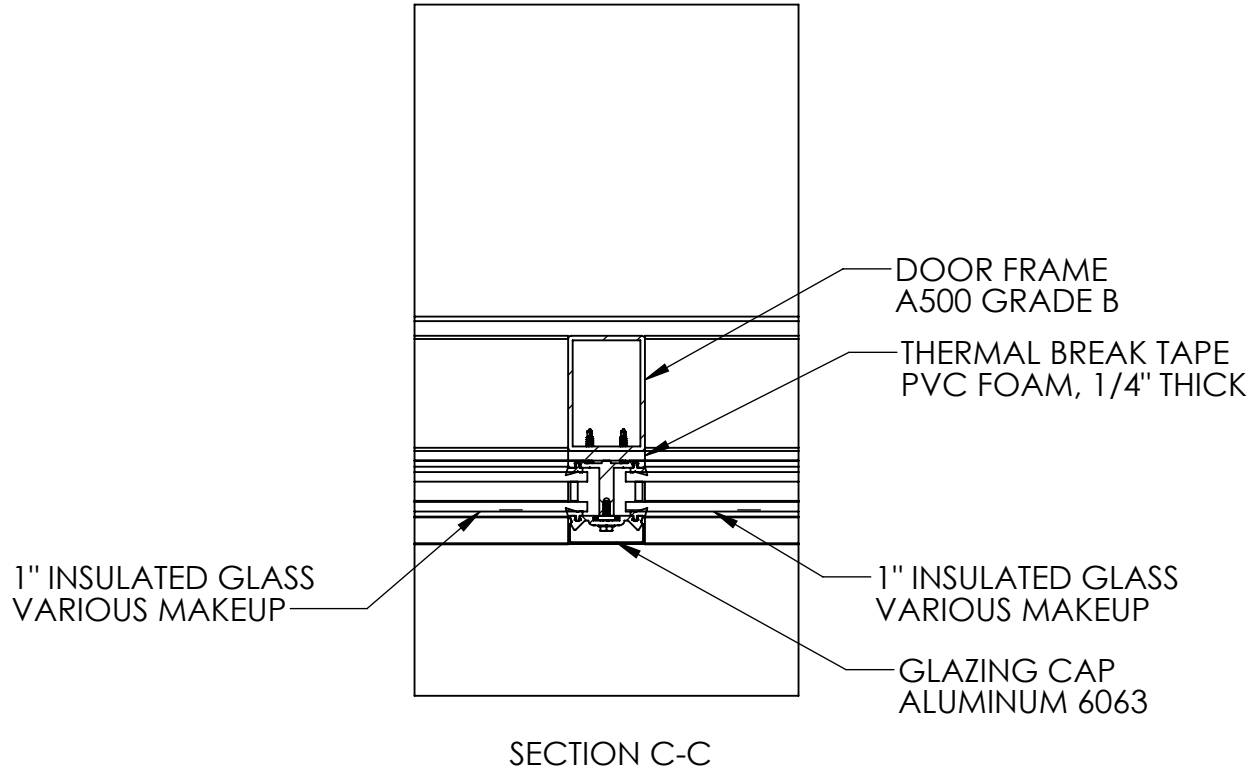
2

1

Wednesday, June 19, 2024 2:35:31 PM

B

B



SECTION C-C

PROPRIETARY AND CONFIDENTIAL

THE INFORMATION CONTAINED IN THIS DRAWING IS THE SOLE PROPERTY OF HYDAWAY HYDRAULIC WALLS. ANY REPRODUCTION IN PART OR AS A WHOLE WITHOUT THE WRITTEN PERMISSION OF HYDAWAY HYDRAULIC WALLS IS PROHIBITED.

A

A

UNLESS OTHERWISE SPECIFIED:

DIMENSIONS ARE IN INCHES
TOLERANCES:
FRACTIONAL ±
ANGULAR: MACH ± BEND ±
TWO PLACE DECIMAL ±
THREE PLACE DECIMAL ±

INTERPRET GEOMETRIC TOLERANCING PER: ASME Y14. 5-2009

MATERIAL

FINISH

NEXT ASSY

USED ON

APPLICATION

DO NOT SCALE DRAWING

NAME DATE

DRAWN

CHECKED

ENG APPR.

MFG APPR.

Q.A.

COMMENTS:

Part Number

TITLE:

Small Frame HydAway
Typical Glass Detail

SIZE Door Type(s)

A

REV

A

SCALE: 1:5

WEIGHT:

SHEET 3 OF 5



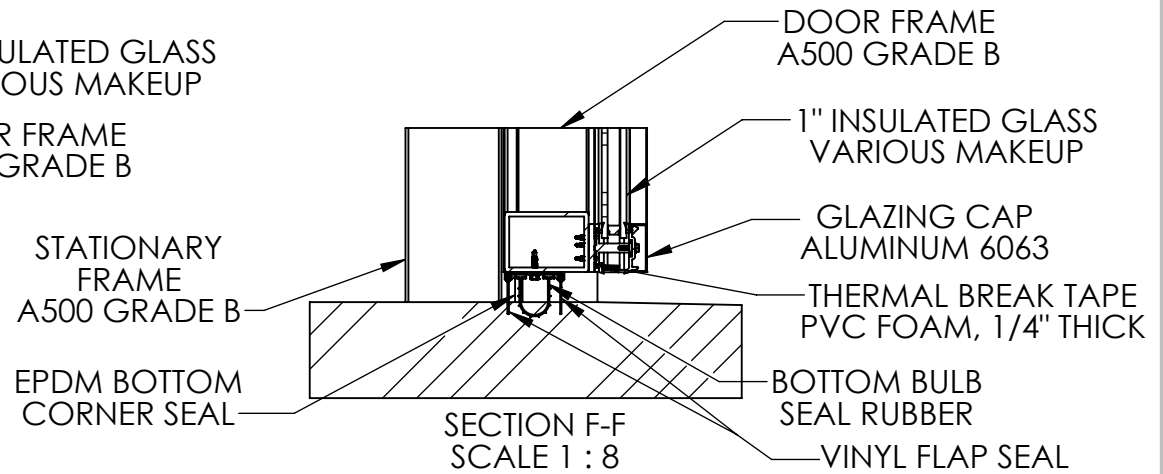
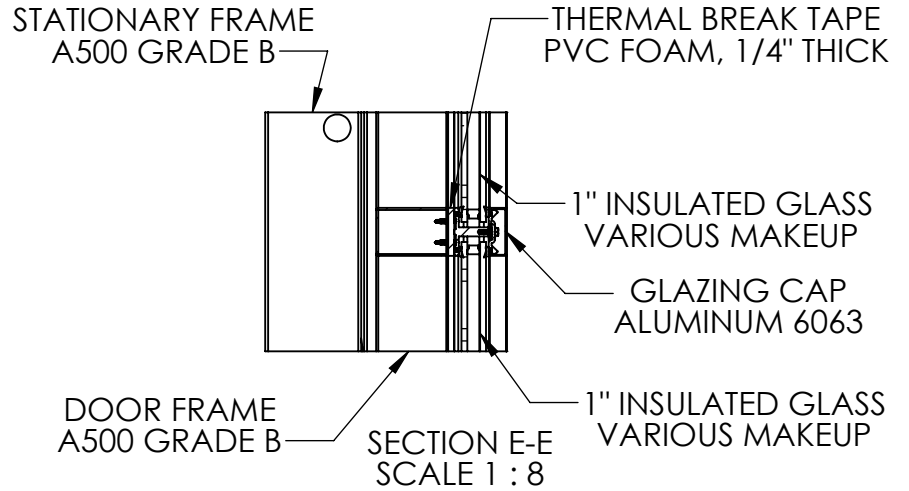
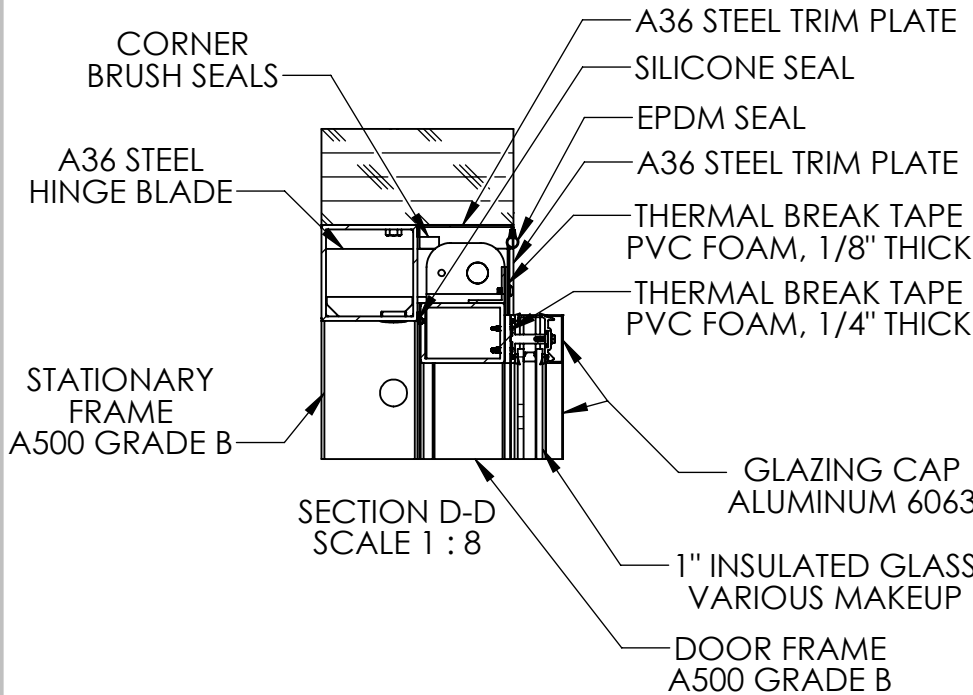
2

1

Wednesday, June 19, 2024 2:35:31 PM

B

B



PROPRIETARY AND CONFIDENTIAL

THE INFORMATION CONTAINED IN THIS DRAWING IS THE SOLE PROPERTY OF HYDAWAY HYDRAULIC WALLS. ANY REPRODUCTION IN PART OR AS A WHOLE WITHOUT THE WRITTEN PERMISSION OF HYDAWAY HYDRAULIC WALLS IS PROHIBITED.

UNLESS OTHERWISE SPECIFIED:
 DIMENSIONS ARE IN INCHES
 TOLERANCES:
 FRACTIONAL ±
 ANGULAR: MACH ± BEND ±
 TWO PLACE DECIMAL ±
 THREE PLACE DECIMAL ±

INTERPRET GEOMETRIC TOLERANCING PER: ASME Y14. 5-2009

MATERIAL

FINISH

DO NOT SCALE DRAWING

NAME	DATE	Part Number
DRAWN		
CHECKED		
ENG APPR.		
MFG APPR.		
Q.A.		
COMMENTS:		

TITLE:
**Small Frame HydAway
 Typical Glass Detail**

SIZE Door Type(s) REV
A **A**

SCALE: 1:32 WEIGHT: SHEET 4 OF 5



NEXT ASSY

USED ON

APPLICATION

A

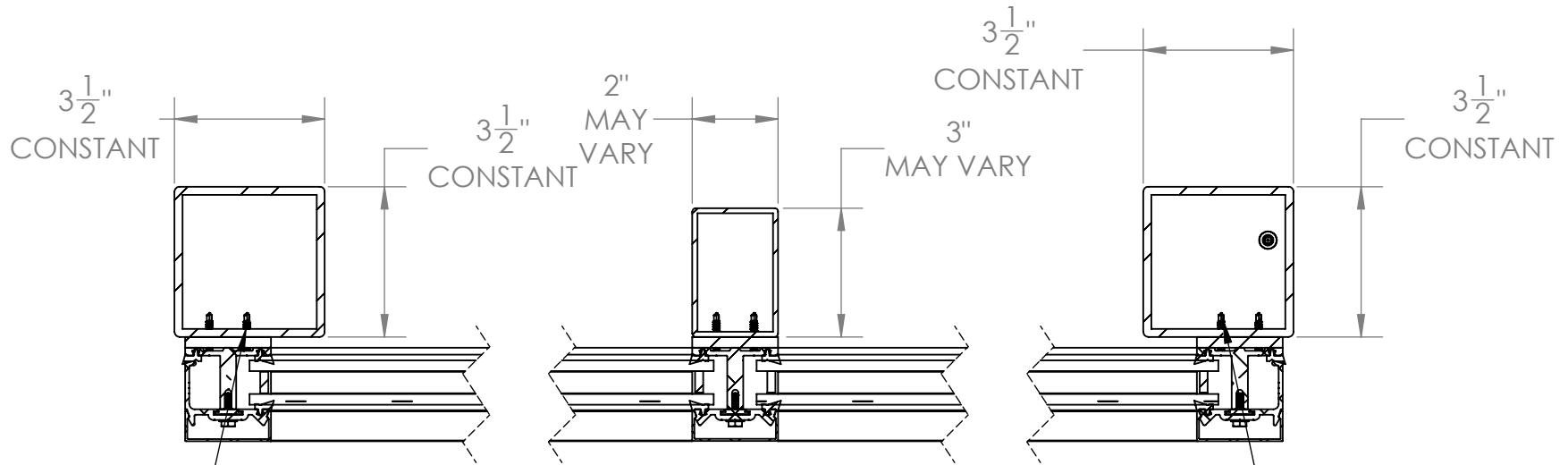
A

2

1

Wednesday, June 19, 2024 2:35:31 PM

Typical Glazing Detail



*****IMPORTANT: SCREWS MAY NEED TO BE GROUND, CUT, OR BROKEN OFF ON INSIDE OF STEEL TUBE TO AVOID INTERFERENCE WITH HYDRAULIC COMPONENTS. ALWAYS VERIFY CLEARANCE BEFORE INSTALLING SCREWS!*****

PROPRIETARY AND CONFIDENTIAL

THE INFORMATION CONTAINED IN THIS DRAWING IS THE SOLE PROPERTY OF HYDAWAY HYDRAULIC WALLS. ANY REPRODUCTION IN PART OR AS A WHOLE WITHOUT THE WRITTEN PERMISSION OF HYDAWAY HYDRAULIC WALLS IS PROHIBITED.



		UNLESS OTHERWISE SPECIFIED:		NAME	DATE	Part Number
		DIMENSIONS ARE IN INCHES		DRAWN		TITLE: Small Frame HydAway Typical Glass Detail
		TOLERANCES:		CHECKED		
		FRACTIONAL ±		ENG APPR.		
		ANGULAR: MACH ± BEND ±		MFG APPR.		
		TWO PLACE DECIMAL ±		Q.A.		
		THREE PLACE DECIMAL ±		COMMENTS:		
		INTERPRET GEOMETRIC TOLERANCING PER: ASME Y14. 5-2009				SIZE Door Type(s) REV A
		MATERIAL				
		FINISH				
	NEXT ASSY	USED ON				
	APPLICATION		DO NOT SCALE DRAWING			SCALE: 1:4 WEIGHT: SHEET 5 OF 5

2

1